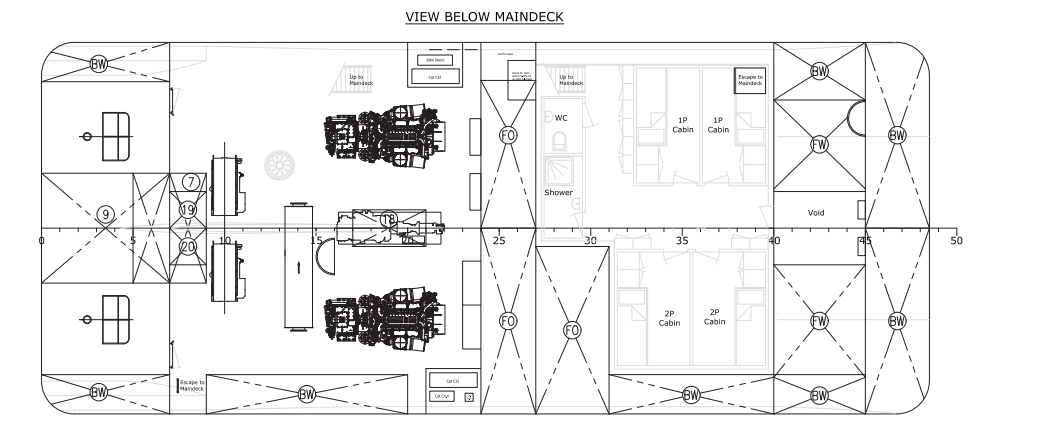
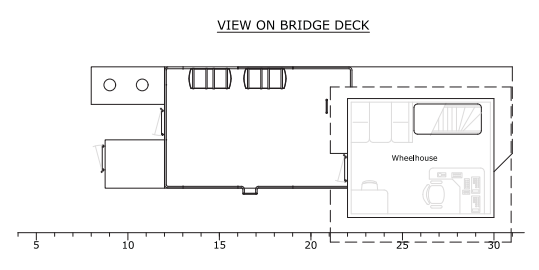
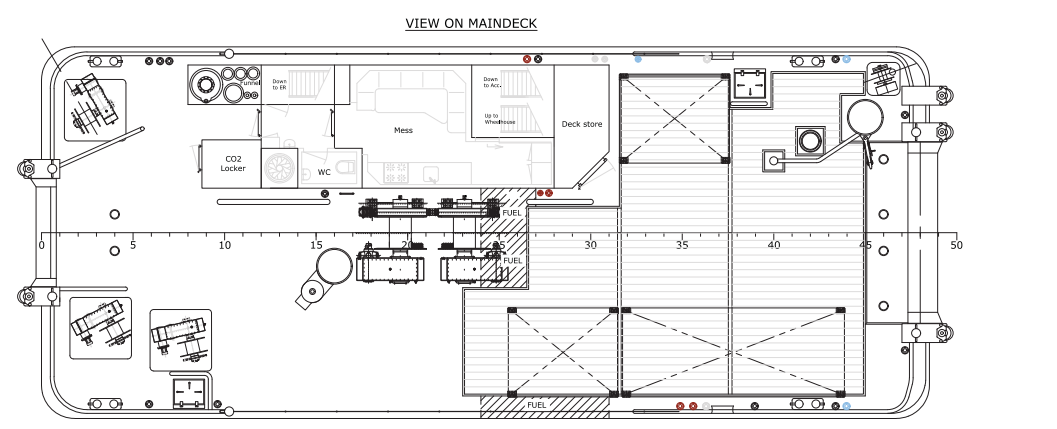
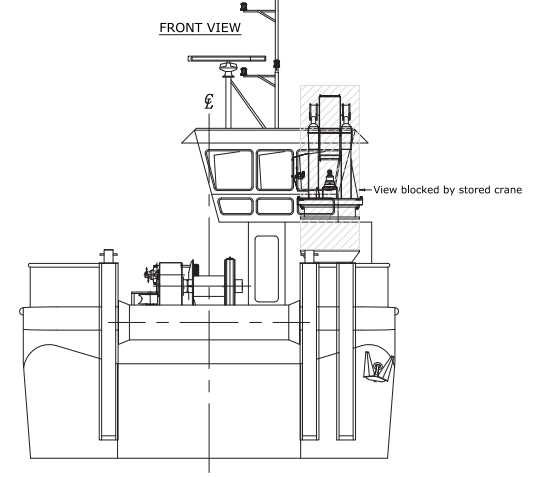
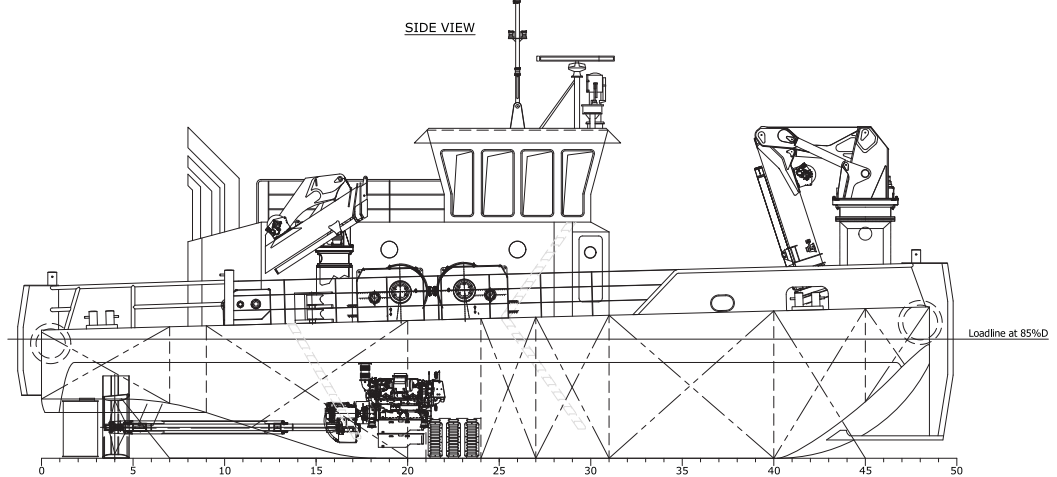


Rev.no.	Revision note	Date	Drawn by	Appr. by
G	Added pushbows aft / portholes	14-04-2011	WH	B&R
H	Removed pushbows aft/odd. hook+beling	26-05-2011	WH	B&R
I	Updated rotation roll-Remarks 29/04/12	04-06-2012	ACH	WH
J	Updated position of tugger winches aft	14-11-2012	WH	WH



Length o.a. 25.55 [m]
 Length mid. 24.25 [m]
 Length between perp. 23.28 [m]
 Breadth o.a. 10.38 [m]
 Breadth mid. 10.15 [m]
 Depth @ 1/2 L 3.81 [m]
 Draught (approx.) 2.50 [m]
 Accommodation 6 persons
 Frame spacing 0.50 [m]

Class: Lloyd's Register 100 A1, Launch, Specified Coastal Service

Speed (approx.) 8 [kts]
 Bollard Pull (approx.) 24 [t]

Main eng.: 2x Caterpillar C32 882 [kW] @ 1800 [rpm]

DEK

DEN BREEJEN SHIPYARD | Jct. Gen. Breejen B.V. | Houtendijk 7 | 3372 RD Houtendijk-Giesseendam | Holland | Phone 0184 - 678140 | Fax 0184 - 678160

HARDINXVELD-GIESSENDAM | SHIPREPAIR | SHIPREPAIR | SHIPREPAIR | SHIPREPAIR

Description: General Arrangement Plan
 MultiWorker Twenty6

Owner: Leask Marine Ltd.

Date: 14-02-2011 | Scale: 1:100 | Order no.: 3528
 Drawn by: I. Hoek Naval Engineering BV | Appr. by: B&R
 Formal: A 0 | Drawn: 04-06-2012 | Appr. by: WH | Rev. no.: 001
 Rev. no.: J